

NANSEMOND 16 point:

A B C D E F G H I J K L M
N O P Q R S T U V W X Y Z
1 2 3 4 5 6 7 8 9 0
+ - @ * ^ _ ; = , . / ! " # \$ % & ' () [\] ^ _ ` { } ~

(Commodore key +)

Plain Bold Outline Italic

20 point:

a b c d e f g h i j k l m n
o p q r s t u v w x y z
A B C D E F G H I J K L M
N O P Q R S T U V W X Y Z
1 2 3 4 5 6 7 8 9 0
+ - @ * ^ _ ; = , . / ! " # \$ % & ' () [\] ^ _ ` { } ~

(Commodore key +)

Plain Bold Outline Italic

23 point:

A B C D E F G H I
J K L M N O P Q R
S T U V W X Y Z
1 2 3 4 5 6 7 8 9 0

NANSEMOND 23 point:

+ - @ * : ; = , . / ! "
\$ % & ' () = ' < > ?

24 point:

**a b c d e f g h i j k l m n
o p q r s t u v w x y z
^ []**

(Commodore key +) - _ e ` z ~ : { ; } \

Plain

Bold

Outline

Italic

NIOBRARA ID 0258/600 16 point:

a b c d e f g h i j k l m n o
p q r s t u v w x y z
A B C D E F G H I J K L M N O
P Q R S T U V W X Y Z
1 2 3 4 5 6 7 8 9 0

+ - @ * ^ : ; = , . / ! " # \$ % & ' () [] = < > ?

(Commodore key +) - _ @ ' * ~

: { ; } / \

Plain

Bold

Outline

Italic

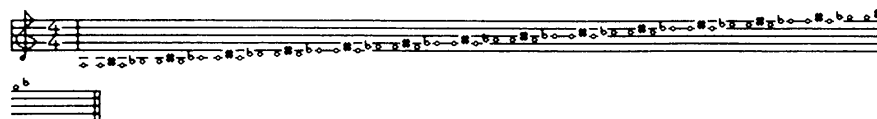
24 point:

a b c d e f g h i j k l m
n o p q r s t u v w x y z

NIOBRARA 24 point:

A B C D E F G H I J K L M N
O P Q R S T U V W X Y Z
1 2 3 4 5 6 7 8 9 0 + - @ * ^ : ;
= , . / ! " # \$ % & ' () [] = < > ?
(Comadore key +) - @ ' * ~
: { ; } / \
Plain Bold Outline Italic

NOTES QTR ID 0098/152 and NOTES WHL ID 0099/153 36 point - following display created by the font author:





This is the way the notes and accompanying notation look. Obviously, to get all these notes I had to use other letters. Here is the list and it hopefully makes some logical sense so that you won't have to think **too** hard.

= a	= h	= r	= b	= j	= t
= c	= k	= y	= d	= l	= u
= e	= :	= i	= f	= ;	= o
= g	= =	= p	= 6	= 4	= /
= ?	= -	= +			

NOTES QTR and NOTES WHL

(The following refers to the notes **A** through **G** above middle C.)

From  on up just push **SHIFT** + the corresponding, previously mentioned

keys. The only notable exception would be the  (upper **C#**) which is

made by pushing **SHIFT**+ **^**.

You will note that the **whole note font** is structured in the same way as the **quarter note font**. Also notice that the flats and sharps are linked in rows (rtquiop and hjkl;:=^).

OCMULGEE ID 0284/644 16 point:

a b c d e f g h i j k l m n o p q r s t u v w x y z

A B C D E F G H I J K L M N O P Q R S T U V W X Y Z

1 2 3 4 5 6 7 8 9 0

+ - @ * ^ : ; = , . / ! " # \$ % & ' () [] = () ?

(Commodore key +) - _ @ ' * , : { ; } / \

Plain Bold Outline Italic

24 point:

a b c d e f g h i j k l m n o

p q r s t u v w x y z

A B C D E F G H I J K L M N O

P Q R S T U V W X Y Z

1 2 3 4 5 6 7 8 9 0 + - @ * ^ : ;

= , . / ! " # \$ % & ' () [] = () ?

(Commodore key +) - _ @ ' * ,

: { ; } / \

Plain Bold Outline Italic

OCMULGEE 31 point:

A B C D E F G H I J K L M
N O P Q R S T U V W X Y Z
1 2 3 4 5 6 7 8 9 0 + - * : ;
= , . / ! " # \$ % & ' () = < > ?

32 point:

a b c d e f g h i j k l m n o p q r s t u v w x y z
@ ^ [] ?

(Commodore key +) - _ e ' ^ ! : / : { : } , \

Plain Bold Outline Italic

OXFORD 12/18 ID 0086/134 12 point:

a b c d e f g h i j k l m n
o p q r s t u v w x y z
A B C D E F G H I J K L M N
O P Q R S T U V W X Y Z
1 2 3 4 5 6 7 8 9 0 - : ; , . ! " # \$ % & ' () ?
Plain Bold Outline Italic

18 point:

a b c d e f g h i j k l m n
o p q r s t u v w x y z
A B C D E F G H I J K L M
N O P Q R S T U V W X Y Z

OXFORD12/18 18 point:

1 2 3 4 5 6 7 8 9 0

~ ! " & ' () ?

Plain Bold Outline Italic

PAMLICO ID 0268/619 12 point:

abcdefghijklmnopqrstuvwxyz

ABCDEFGHIJKLMNOPQRSTUVWXYZ

1234567890 + - @ * ^ : ; = , . / ! " # \$ % & ' () [] = < > ?

(Commodore key +) - _ @ ' * ~ : { ; } / \

Plain Bold Outline Italic

16 point:

abcdefghijklmnopqrstuvwxyz

ABCDEFGHIJKLMNOPQRSTUVWXYZ

1234567890

+ - @ * ^ : ; = , . / ! " # \$ % & ' () [] = < > ?

(Commodore key +) - _ @ ' * ~ : { ; } / \

Plain Bold Outline Italic

20 point:

abcdefghijklmnopqrstuvwxyz

ABCDEFGHIJKLMNOPQRSTUVWXYZ

1234567890

+ - @ * ^ : ; = , . / ! " # \$ % & ' () [] = < > ?

(Commodore key +) - _ @ ' * ~ : { ; } / \

Plain Bold Outline Italic

PAMLICO 24 point:

a b c d e f g h i j k l m
n o p q r s t u v w x y z
A B C D E F G H I J K L M
N O P Q R S T U V W X Y Z
1 2 3 4 5 6 7 8 9 0 + - @ * ^ :
; = , . / ! " # \$ % & ' () [] = < > ?
(Commodore key +) - @ ' * ~
: { ; } / \
Plain Bold Outline Italic

PENOBSCOT ID 025B/603 16 point:

a b c d e f g h i j k l m n o p q r s t u v w x y z
A B C D E F G H I J K L M N O P Q R S T U V W X Y Z
1 2 3 4 5 6 7 8 9 0
+ - e * ^ : ; = , . / ! " # \$ % & ' () [] = < > ?
(Commodore key +) - e ' * ~ : { ; } / \
Plain Bold Outline Italic

24 point:

a b c d e f g h i j k l m n
o p q r s t u v w x y z
A B C D E F G H I J K L M N
O P Q R S T U V W X Y Z
1 2 3 4 5 6 7 8 9 0 + - e * ^ : ;
= , . / ! " # \$ % & ' () [] = < > ?

(Commodore key +) * ~

! { ; } - / \

Plain **Bold** *Outline* *Italic*

abcdefghijklmnopqrstuvwxyz
 ABCDEFGHIJKLMNOPQRSTUVWXYZ
 1234567890
 + - * ^ ; : = , . / ! " # \$ % & ' () [] = < > ?
 (Commodore key +) - _ @ ` * ~ : { ; } / \

Plain Bold Outline ~~Text~~

A B C D E F G H I J K L M N O P Q R S T U V W X Y Z
A L A / A L A A L A / A L A / A L A /

A A A A A A A / A A A A A
 A A A A A A A V A A A A A
 A A A A A A A A A A A
 A A A A A A A A A A A
 A A A A A A A A A A A

a b c d e f g h i j k l m n o p q r s t u v w x y z
A B C D E F G H I J K L M N O P Q R S T U V W X Y Z

RAMAPO 16 point:

1 2 3 4 5 6 7 8 9 0

+ - @ * ^ : ; = , . / ! " ' % & ' () [] = < > ?

(Commodore key +) - _ @ ' * ~ : { ; } / \

Plain Bold Outline *Italic*

20 point:

a b c d e f g h i j k l m n

o p q r s t u v w x y z

▲ B C D E F G H I J K L M N

● P Q R S T U V W X Y Z

1 2 3 4 5 6 7 8 9 0

+ - @ * ^ : ; = , . / ! " ' % & ' () [] = < > ?

(Commodore key +) - _ @ ' * ~

: { ; } / \

Plain Bold Outline *Italic*

24 point:

a b c d e f g h i j k l m

n o p q r s t u v w x y z

▲ B C D E F G H I J K L M

N O P Q R S T U V W X Y Z

1 2 3 4 5 6 7 8 9 0 + - @ * ^ : ;

= , . / ! " ' % & ' () [] = < > ?

(Commodore key +) - _ @ ' * ~

: { ; } / \

Plain Bold Outline *Italic*

ROUNDED ID 02CA/714 20 point:

a b c d e f g h i j k l m
n o p q r s t u v w x y z
A B C D E F G H I J K L M
N O P Q R S T U V W X Y Z
PLAIN BOLD OUTLINE *ITALIC*

SACO ID 025D/605 12 point:

a b c d e f g h i j k l m n o p q r s t u v w x y z
A B C D E F G H I J K L M N O P Q R S T U V W X Y Z
1 2 3 4 5 6 7 8 9 0 + - @ * ^ ; = , . / ! " # \$ % & ' () [] = < > ?
(Commodore key +) - _ @ * ~ : { ; } / \
Plain Bold Outline *Italic*

24 point:

a b c d e f g h i j k l m
n o p q r s t u v w x y z
A B C D E F G H I J K L M
N O P Q R S T U V W X Y Z
1 2 3 4 5 6 7 8 9 0 + - @ * ^
: ; = , . / ! " # \$ % & ' () [] = < > ?
(Commodore key +) - _ @ * ~
: { ; } / \
Plain Bold
Outline *Italic*

SANGAMON ID 025E/606 12 point:

a b c d e f g h i j k l m n o p q r s t u v w x y z
A B C D E F G H I J K L M N O P Q R S T U V W X Y Z
1 2 3 4 5 6 7 8 9 0

SANGAMON 12 point:

+ - @ * ^ : ; = , . / ! " # \$ % & ' () [] = < > ?

(Commodore key +) - _ @ ` * ~ : { ; } / \

Plain **Bold** Outline *Italic*

16 point:

a b c d e f g h i j k l m n o

p q r s t u v w x y z

A B C D E F G H I J K L M N O

P Q R S T U V W X Y Z

1 2 3 4 5 6 7 8 9 0

+ - @ * ^ : ; = , . / ! " # \$ % & ' () [] = < > ?

(Commodore key +) - _ @ ` * ~ : { ; } / \

Plain **Bold** Outline *Italic*

20 point:

a b c d e f g h i j k l m

n o p q r s t u v w x y z

A B C D E F G H I J K L M

N O P Q R S T U V W X Y Z

1 2 3 4 5 6 7 8 9 0 + - @ * ^ : ;

= , . / ! " # \$ % & ' () [] = < > ?

(Commodore key +) - _ @ ` * ~

: { ; } / \

Plain **Bold** Outline *Italic*

24 point:

a b c d e f g h i j k l m

n o p q r s t u v w x y z

SANGAMON 24 point:

A B C D E F G H I J K L M
N O P Q R S T U V W X Y Z
1 2 3 4 5 6 7 8 9 0

+ - @ * ^ : ; = , . / ! "
\$ % & ' () [] = < > ?

(Commodore key +)

- @ ` ~
: { ; } / \

Plain

Bold

Outline

Italic

31 point:

A B C D E F G H I J
K L M N O P Q R S T
U V W X Y Z

1 2 3 4 5 6 7 8 9 0

+ - * : ; , . / ! "

\$ % & ' ()

32 point:

a b c d e f g h i j k l m n
o p q r s t u v w x y z

SANGAMON 32 point:

= @ ^ [] < > ?

(Commodore key +) - _ e ` ~ { } \

Plain

Bold

Outline

Italic

SANTEE ID 0260/608 16 point:

a b c d e f g h i j k l m n o p q r s t u v w x y z
A B C D E F G H I J K L M N O P Q R S T U V W X Y Z
1 2 3 4 5 6 7 8 9 0

+ - @ * ^ : ; = , . / ! " # \$ % & ' () [] = < > ?

(Commodore key +) - _ @ ' * ~ : {

; } / \

Plain

Bold

Outline

Italic

20 point:

a b c d e f g h i j k l m n o
p q r s t u v w x y z
A B C D E F G H I J K L M N O
P Q R S T U V W X Y Z
1 2 3 4 5 6 7 8 9 0

+ - @ * ^ : ; = , . / ! " # \$ % & ' () [] = < > ?

(Commodore key +) - _ @ ' * ~

: { ; } / \

Plain

Bold

Outline

Italic

SANTEE 32 point:

a b c d e f g h i j k l m
n o p q r s t u v w x y z
A B C D E F G H I J K L M
N O P Q R S T U V W X Y Z
1 2 3 4 5 6 7 8 9 0
+ - @ * ^ : ; = , . / ! " # \$ % & ' () [] = < > ?
(Commodore key +) - @ ' * ~
: { ; } / \
Plain Bold Outline Italic

SCIOTO ID 0266/614 18 point:

a b c d e f g h i j k l m n o p q r s t u v w x y z
A B C D E F G H I J K L M N O P Q R S T U V W X Y Z
1 2 3 4 5 6 7 8 9 0
+ - * ^ : ; = , . / ! " \$ % & ' () [] = < > ? * = "
(Commodore key +) - @ ' * ~ : { ; } / \
Plain Bold Outline Italic

24 point:

a b c d e f g h i j k l m n o p q r s t u v w x y z

SCIOTO 24 point:

A B C D E F G H I J K L M

N O P Q R S T U V W X Y Z

1 2 3 4 5 6 7 8 9 0

+ - * ^ : ; = , . / ! " ' \$ % & ' () [] = < > ?

(Commodore key +) - _ e ' * ~ : {

; } / \

Plain Bold Outline Italic

SCOREBOARD IP ID 02CB/715 25 point:

Scoreboard IP ID 02CB/715 25 point:
Scoreboard IP ID 02CB/715 25 point:
Scoreboard IP ID 02CB/715 25 point:
Scoreboard IP ID 02CB/715 25 point:

= is

SHADOW 2 ID 01F4/500 8 point:

character set

A B C D E F G H I J K L M N O P Q R S T U V W X Y Z

1 2 3 4 5 6 7 8 9 0

+ - * ^ : ; = , . / ! " ' \$ % & ' () [] = < > ?

PLAIN BOLD OUTLINE ITALIC

SPEED ID 02C5/709 18 point:

A B C D E F G H I J K L M

N O P Q R S T U V W X Y Z

1 2 3 4 5 6 7 8 9 0 + - * ^ : ; = , . / ! " # \$ () = < > ?

(Commodore key +) * ~

PLAIN BOLD OUTLINE ITALIC

STAR TREK TNG ID 00EC/236 18 point:

A B C D E F G H I J K L M N O P Q R S T U V W X Y Z
A B C D E F G H I J K L M
N O P Q R S T U V W X Y Z
1 2 3 4 5 6 7 8 9 0
+ - * : ; = , . ! " # \$ % & ' () : ; = - - = ? ° = ☞
Plain Bold Outline Italic

STRETCH ID 02C2/706 18 point:

a b c d e f g h i j k l m n o p q r s t u v w x y z
A B C D E F G H I J K L M N O P Q R S T U V W X Y Z
1 2 3 4 5 6 7 8 9 0 + - @ * ^ ; , . / ! " # \$ % & ' () [] = < > ?
(Commodore key +) - _ @ ' ~ * ~ : { ; } / \
Plain Bold Outline Italic

TAKOMA ID 02F7/759 12 point:

id Ib c d e f g h i j k l m n o p q r s t u v w x y z
A B C D E F G H I J K L M N O P Q R S T U V W X Y Z
1 2 3 4 5 6 7 8 9 0
+ - @ * ^ ; , . / ! " # \$ % & ' () [] = < > ?
(Commodore key +) - _ @ ' ~ * ~ : { ; } / \
Plain Bold Outline Italic

24 point:

id Ib c d e f g h i j k l m n
o p q r s t u v w x y z
A B C D E F G H I J K L M
N O P Q R S T U V W X Y Z
1 2 3 4 5 6 7 8 9 0

TAKOMA 24 point:

+ - ® * ^ : ; = , . / ! " # \$ % & ' () [] = < > ?

(Commodore key +)

: { ; } / \ * ~

Plain

Bold

Outline

Italic

TIPPECANOE ID 027B/635 16 point:

abcdefghijklmnopqrstuvwxyz
ABCDEFGHIJKLMNOPQRSTUVWXYZ
1234567890+-@*^:;=,./!"\$%&'()[]=<>?

(Commodore key +) - _ @ ' * ~ : { ; } / \

Plain **Bold** **Outline** *Italic*

20 point:

abcdefghijklmnopqrstuvwxyz
ABCDEFGHIJKLMNOPQRSTUVWXYZ
1234567890+-@*^:;=,./!"\$%&'()[]=<>?

(Commodore key +) - _ @ ' * ~ : { ; } / \

Plain **Bold** **Outline** *Italic*

24 point:

abcdefghijklmnopqrstuvwxyz
ABCDEFGHIJKLMNOPQRSTUVWXYZ

TIPPECANOE 24 point:

1 2 3 4 5 6 7 8 9 0

+ - @ * ↑ : ; = , . / ! " ' \$ % & ' () [] = < > ?

(Commodore key +) - _ @ ' * ~ : { ; } / \

Plain **Bold** Outline *Italic*

32 point:

a b c d e f g h i j k l m

n o p q r s t u v w x y z

A B C D E F G H I J K L M

N O P Q R S T U V W X Y Z

1 2 3 4 5 6 7 8 9 0 + - @ * ↑ : ; =

, . / ! " ' \$ % & ' () [] = < > ?

(Commodore key +) - _ @ ' * ~

: { ; } / \

Plain **Bold** Outline *Italic*

TOMBIGBEE ID 0263/611 24 point:

a b c d e f g h i j k l m n o p q r s t u v w x y z

A B C D E F G H I J K L M N O P Q R S T U V W X Y Z

1 2 3 4 5 6 7 8 9 0 + - @ * ^ : ; = , . / ! " # \$ % & ' () [] = { } ?

TOMBIGBEE 24 point:

(Commodore key +) - _ @ ' x ~ : { ; } / \
Plain Bold Outline ~~Italic~~

32 point:

abcdefghijklmnopqrstuvwxyz
ABCDEFGHIJKLMNOPQRSTUVWXYZ
1234567890 +-@*^:;=,./!"#\$%&'()[]=<>?
(Commodore key +) - _ @ ' x ~ : { ; } / \
Plain Bold Outline ~~Italic~~

TUOLUMNE ID 026F/623 11 point:

ilq√AEFIMQUO* & <>

12 point:

abcdefghijklmnopqrstuvwxyz
ABCDEFGHIJKLMNOPQRSTUVWXYZ
1234567890 +- *^:;=,./!"#\$%&'()[]=<>?
(Commodore key +) - _ @ ' x ~ : { ; } / \
Plain Bold Outline ~~Italic~~

23 point:

eilq√AEFIMQUO* & <>

TUOLUMNE 24 point:

a b c d e f g h i j k l m n o p q r s t u v w x y z

A B C D E F G H I J K L M N

O P Q R S T U V W X Y Z

1 2 3 4 5 6 7 8 9 0

+ - * ^ ; : = , . / ! " ' \$ % & ' () [] = < > ?

(Commodore key +) - _ : { ; } / \

Plain Bold Outline Italic

UNDERSCORE FONT ID 02CA/714 18 point:

A B C D E F G H I J K L M N

O P Q R S T U V W X Y Z

A B C D E F G H I J K L M N

O P Q R S T U V W X Y Z

PLAIN BOLD OUTLINE ITALIC

UNDERSCORE 2 ID 02CA/714 18 point:

A B C D E F G H I J K L M

N O P Q R S T U V W X Y Z

A B C D E F G H I J K L M N

O P Q R S T U V W X Y Z

PLAIN BOLD OUTLINE ITALIC

BIJOU ID 02F1/753 28 point:

a b c d e f g h i j k l m
 n o p q r s t u v w x y z
 A B C D E F G H I J K L M
 N O P Q R S T U V W X Y Z
 Plain Bold Outline Italic

BILLETS ID 03EB/1003 26 point:

A B C D E F G H I J K L M N
 O P Q R S T U V W X Y Z
 1 2 3 4 5 6 7 8 9
 PLAIN BOLD OUTLINE

BINARY2 ID02E8/744 14 point:

a b c d e f g h i j k l m n o p q r s
 t u v w x y z A B C D E F G H I J K L
 M N O P Q R S T U V W X Y Z 1 2 3 4 5 6 7 8 9
 0 1 2 3 4 5 6 7 8 9 + - @ * > : ; ' / ?
 { } ~ # % & ' () * + , - . / : ; ' / ?
 (Commandore key +) - _ @ \$ * % : ; ' / ?

BOXED ID 02DA/730 22 point:

A B C D E F G H I J K L M N O P Q R S T U V
 W X Y Z - is = is () is [] is
 [PLAIN] [BOLD] [OUTLINE] [ITALIC]

BULLFROG ID 02F3/755 24 point:

A B C D E F G H I J K L M
N O P Q R S T U V W X Y Z
PLAIN BOLD
OUTLINE ITALIC

COMICY1 ID 0210/752 24 point:

A B C D E F G H I J K L M N O P Q
R S T U V W X Y Z , . ! ?
PLAIN BOLD OUTLINE ITALIC

CRUSADER ID 02E6/742 18 point:

A B Ø Ð E F G H I J K L M
N O P Q R S T U V W X Y Z
PLAIN BOLD OUTLINE ITALIC

36 point:

A B Ø Ð E F G H I J K
L M N O P Q R S T
U V W X Y Z
PLAIN BOLD
OUTLINE ITALIC

D'NEALIAN ID 0076/118 6 point:

abcdefghijklmnopqrstuvwxyz
ABCDEFGHIJKLMNOPQRSTUVWXYZ
1234567890+-@*π;=,./!"#\$%&'()[]=<>?
(Commodore key +) - _ @ ' * ~ : { ; } / \

Plain Bold Outline Italic

10 point:

abcdefghijklmnopqrstuvwxyz
ABCDEFGHIJKLMNOPQRSTUVWXYZ
1234567890+-@*π;=,./!"#\$%&'()[]=<>?
(Commodore key +) - _ @ ' * ~ : { ; } / \

Plain Bold Outline Italic

12 point:

abcdefghijklmnopqrstuvwxyz
ABCDEFGHIJKLMNOPQRSTUVWXYZ
1234567890+-@*π;=,./!"#\$%&'()[]=<>? ^ = π
(Commodore key +) - _ @ ' * ~ : { ; } / \

Plain Bold Outline Italic

14 point:

abcdefghijklmnopqrstuvwxyz
ABCDEFGHIJKLMNOPQRSTUVWXYZ
1234567890+-@*π;=,./!"#\$%&'()[]=<>?
(Commodore key +) - _ @ ' * ~ : { ; } / \

Plain Bold Outline Italic

18 point

abcdefghijklmnopqrstuvwxyz
ABCDEFGHIJKLMNOPQRSTUVWXYZ
1234567890+-@*π;=,./!"#\$%&'()[]=<>?
(Commodore key +) - _ @ ' * ~ : { ; } / \

Plain Bold Outline Italic

D'NEALIAN 24 point:

a b c d e f g h i j k l m n o p q r s t u v w x y z

A B C D E F G H I J K L M

N O P Q R S T U V W X Y Z

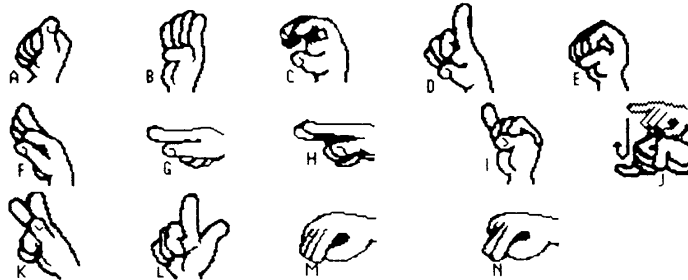
1 2 3 4 5 6 7 8 9 0 + - @ * π ; , . / ! " #

\$ % & ' () [] = < > ?

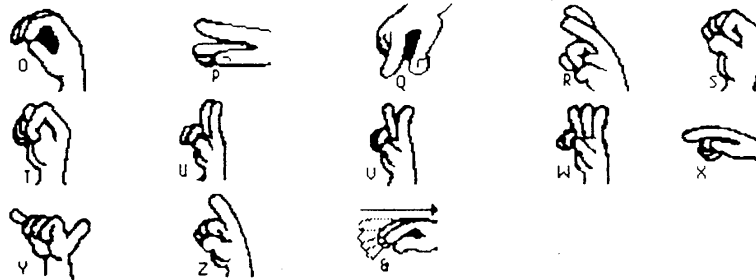
(Commodore key +) - _ @ ' * ~ : { ; } / \

Plain Bold Outline *Italic*

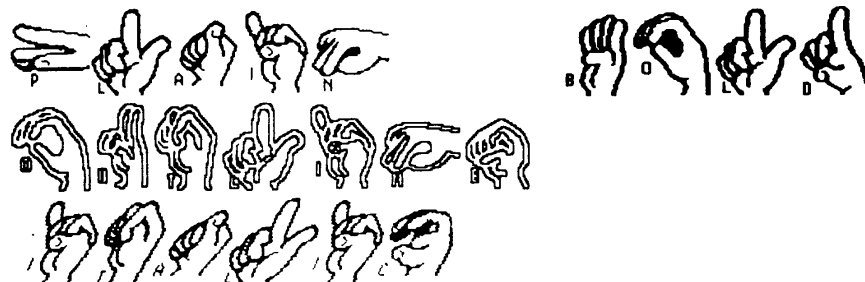
DACTUS/A-B ID 01F4/500 48 point:



DACTUS/O-Z-6 ID 021F5/501 48 point:



DACTUS/A-N and O-Z



DOWNTACK ID 02E4/740 24 point:

A B C D E F G H I J K L M
 N O P Q R S T U V W X Y Z
 PLAIN BOLD OUTLINE ITALIC

FISSION ID 02DC/732 36 point:

A B C D E F G H I J
 K L M N O P Q R
 S T U V W X Y Z
 PLAIN BOLD
 OUTLINE ITALIC

GET DOWN ID 02DF/735 18 point:

A B C D E F G H I J K L M N O P Q R S T U V W X Y Z
PLAIN BOLD OUTLINE *ITALIC*

GOTHIC3 ID 00AF/173 27 point:

a b c d e f g h i j k l m n o p q r s t u v w x y z
A B C D E F G H I J K L M
N O P Q R S T U V W X Y Z
1 2 3 4 5 6 7 8 9 0
+ - = , . / ! " # % ' < > ?
Plain Bold Outline *Italic*

GREECE ID 02D3/723 12 point:

A B C D E F G H I J K L M N O P Q R S T U V W X Y Z
PLAIN BOLD OUTLINE *ITALIC*

HALF & HALF ID 02E3/739 24 point:

A B C D E F G H I J K L M
N O P Q R S T U V W X Y Z
A B C D E F G H I J K L M
N O P Q R S T U V W X Y Z
PLAIN BOLD
OUTLINE *ITALIC*

HALVED ID 02E2/738 24 point:

A B C D E F G H I J K L M
N O P Q R S T U V W X Y Z
PLAIN BOLD OUTLINE *ITALIC*

HEATHER ID 02EA/746 24 point:

a b c d e f g h i j k l m
n o p q r s t u v w x y z
A B C D E F G H I J K L M
N O P Q R S T U V W X Y Z
Plain Bold Outline *Italic*

HIGH STRUNG ID 02DD/733 18 point:

A B C D E F G H I J K L M N O P Q R S T U V W X Y Z
PLAIN BOLD OUTLINE *ITALIC*

IMPLIED ID 02DD/720 18 point:

A B C D E F G H I J K L M N O P Q R S T U V W X Y Z
PLAIN BOLD OUTLINE *ITALIC*

ITALIAN 2 ID 02D8/728 28 point:

A B C D E F G H I J K L M N
O P Q R S T U V W X Y Z
PLAIN BOLD OUTLINE *ITALIC*

ITALIAN PRINT ID 02D6/726 28 point:

A B C D E F G H I J K L M N
O P Q R S T U V W X Y Z
PLAIN BOLD OUTLINE *ITALIC*

LINES & DOTS ID 02CF/719 20 point:

A B C D E F G H I J K L M N
O P Q R S T U V W X Y Z
PLAIN BOLD OUTLINE *ITALIC*

MEGA CRAZY1 ID 02F2/754

A B C D E F G H I J K L M N O
P Q R S T U V W X Y Z
PLAIN BOLD OUTLINE *ITALIC*

MEGA HEADERETTE ID 00FD/253

A B C D E F G H I J K L M
N O P Q R S T U V W X Y Z

MEGA HEADERETTE

ABCDEFGHIJKLMN
OPQRSTUVWXYZ
1234567890



PLAIN
OUTLINE

BOLD
ITALIC

MEGA JEANNIE ID 0028/40

ABCDEFGHIJKLMNO
PQRSTUVWXYZ

MEGA JEANNIE

A B C D E F G H I J K L M
N O P Q R S T U V W X Y Z
1 2 3 4 5 6 7 8 9 0 .
PLAIN BOLD
OUTLINE ITALIC

MEGA SOCIETY ID 00FE/254

Upper and lower case identical

A B C D E F G H I J K L M N O
P Q R S T U V W X Y Z
: ; ! " ' , .
PLAIN BOLD
OUTLINE ITALIC

MEGAOK ID 0086/134

abcdefghijklmnop
pqrstuvwxyz
ABCDEFGHIJKLMNO
PQRSTUVWXYZ
1234567890::?
!"#\$%&'() , . - is ~
Plain Bold
Outline *Italic*

MESSY1 ID 02E2/743 14 point:

ABCDEFGHIJKLMN OPQRSTUVWXYZ
PLAIN BOLD OUTLINE *ITALIC*

MODERN STENCIL ID 02D4/724 24 point:

ABCDEFGHIJKLMN
OPQRSTUVWXYZ
PLAIN BOLD OUTLINE *ITALIC*

OLDEN ID 02D5/725 28 point:

ABCDEFGHIJKLM
NOPQRSTUVWXYZ
PLAIN BOLD
OUTLINE *ITALIC*

PEACE ID 02EE/750 18 point:

abcdefghijklmnopqrstuvwxyz
 ABCDEFGHIJKLMNOPQRSTUVWXYZ
 1234567890+-@x^y=90/1"#\$%&'()[]=<>?
 (Commodore key +) - _ @ ' x ~ { } / \
 Plain Bold Outline Italic

SCORE ID 02D9/729 18 point:

ABCDEFGHIJKLM
 NOPQRSTUVWXYZ
 ABCDEFGHIJKLM
 NOPQRSTUVWXYZ
 - IS - BOLD = IS -
 PLAIN BOLD OUTLINE ITALIC

19 point:

ABCDEFGHIJKLM
 NOPQRSTUVWXYZ
 ABCDEFGHIJKLM
 NOPQRSTUVWXYZ
 PLAIN BOLD OUTLINE ITALIC

20 point:

ABCDEFGHIJKLM
 NOPQRSTUVWXYZ
 ABCDEFGHIJKLM
 NOPQRSTUVWXYZ
 PLAIN BOLD OUTLINE ITALIC

SCORE 21 point:

A B C D E F G H I J K L M
 N O P Q R S T U V W X Y Z
 A B C D E F G H I J K L M
 N O P Q R S T U V W X Y Z
 PLAIN BOLD OUTLINE *ITALIC*

SCRABBLE ID 00B4/180 12 point:

a b c d e f g h i j k l m n o p q r s t u v w x y z
 A B C D E F G H I J K L M N O P Q R S T U V W X Y Z
 1 2 3 4 5 6 7 8 9 0 + - @ * ^ ; : = , . / ' ! " # \$ % & ' () [] = < > ?
 (Commodore key +) - _ @ ' * ~ : (;) / \
 Plain Bold Outline Italic

26 point:

A₁ B₂ C₃ D₂ E₁ F₄ G₂ H₄ I₁ J₈
 K₅ L₁ M₃ N₁ O₁ P₃ Q₁₀ R₁ S₁ T₁
 U₁ V₄ W₄ X₈ Y₄ Z₁₀
 * = P₃ L₁ A₁ I₁ N₁ B₂ Q₁ L₁ D₂
 Q U T L I N E I T A L I C

SCRIBBLE ID 02EF/751 28 point:

A B C D E F G H I J K L M N O P Q R S T U V W X Y Z
 A B C D E F G H I J K L M N O P Q R S T U V W X Y Z
 A B C D E F G H I J K L M N O P Q R S T U V W X Y Z
 A B C D E F G H I J K L M N O P Q R S T U V W X Y Z

SHADOWED BARS 2 ID 02C9/713 40 point:

A B C D E F G H I
J K L M N O P Q R
S T U V W X Y Z
PLAIN BOLD
OUTLINE *ITALIC*

SHOTGUN ID 02E1/737 24 point:

A B C D E F G H I J K L M
N O P Q R S T U V W X Y Z
PLAIN BOLD OUTLINE *ITALIC*

SIRE ID 01F4/500 8 point:

Character set

A B C D E F G H I J K L M N O P Q R S T U V W X Y Z
1 2 3 4 5 6 7 8 9 0
+ - 0 * ! : ; = , . / ! " # \$ % & ' () [] = < > ?
(Commodore key +) - - 0 " * + : + ; & / ↑
PLAIN BOLD OUTLINE *ITALIC*

SIX.BTP ID 001A/26 10 point:

a b c d e f g h i j k l m n o p q r s t u v w x y z
A B C D E F G H I J K L M N O P Q R S T U V W X Y Z
1 2 3 4 5 6 7 8 9 0
+ - 0 * ! : ; = , . / ! " # \$ % & ' () [] = < > ?
(Commodore key +) - - / \
Plain Bold OUTLINE *Italic*

SMALL ID 01F4/500 8 point:

Character set

A B C D E F G H I J K L M N O P Q R S T U V W X Y Z
 1 2 3 4 5 6 7 8 9 0
 + - @ * ! : ; = , . / ' " # \$ % & ' () [] = < > ?
 (Commodore key +) - - @ " * + : + ; < / +
 PLAIN BOLD OUTLINE ITALIC

SQUARE ID 02CD/717 12 point:

a b c d e f g h i j k l m n o p q r s t u v w x y z
 A B C D E F G H I J K L M N O P Q R S T U V W X Y Z
 1 2 3 4 5 6 7 8 9 0
 + - @ * ! : ; = , . / ' " # \$ % & ' () [] = < > ?
 (Commodore key +) - - @ " * + : + ; < / +
 Plain Bold Outline Italic

18 point:

a b c d e f g h i j k l m
 n o p q r s t u v w x y z
 A B C D E F G H I J K L M
 N O P Q R S T U V W X Y Z
 1 2 3 4 5 6 7 8 9 0
 + - @ * ! : ; = , . / ' " # \$ % & ' () [] = < > ?
 (Commodore key +) - - @ " * + : + ; < / +
 Plain Bold Outline Italic

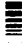

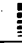
24 point:

a b c d e f g h i j k l m
 n o p q r s t u v w x y z
 A B C D E F G H I J K L M
 N O P Q R S T U V W X Y Z

SQUARE 24 point:

1 2 3 4 5 6 7 8 9 0 + - @ # \$ % & ' () [] ^ _ { } ?
 , . / ! " # \$ % & ' () [] ^ _ { } ?
 (Commodore key +)
 Plain Bold Outline Italic

SUNSET ID 02E5/741 18 point:

A B C D E F G H I J K L M
 N O P Q R S T U V W X Y Z
 - is  = < is  / is 
 PLAIN BOLD OUTLINE ITALIC

TECH1 ID 0002/2 18 point:

A B C D E F G H I J K L M
 N O P Q R S T U V W X Y Z
 PLAIN BOLD OUTLINE ITALIC

THIN2 ID 01F4/500 8 point:

Character set

a b c d e f g h i j k l m n o p q r s t u v w x y z
 A B C D E F G H I J K L M N O P Q R S T U V W X Y Z
 1 2 3 4 5 6 7 8 9 0
 + - @ * ! : ; = , . / ' " # \$ % & ' () [] ^ _ { } ?
 (Commodore key +) - - @ * * + : + ; / ↑
 Plain Bold Outline Italic

TINY ID 01F4/500 8 point:

Character set

A B C D E F G H I J K L M N O P Q R S T U V W X Y Z
 1 2 3 4 5 6 7 8 9 0
 + - @ * ! : ; = , . / ' " # \$ % & ' () [] ^ _ { } ?
 (Commodore key +) - - @ * * + : + ; / ↑
 PLAIN BOLD OUTLINE ITALIC

TUBES ID 02DB/731 24 point:

A B C D E F G H I J K L M N O
P Q R S T U V W X Y Z
PLAIN BOLD OUTLINE ITALIC

VIENNA ID 008F/143 25 point:

A B C D E F G H I J K L M
N O P Q R S T U V W X Y Z
A B C D E F G H I J K L M
N O P Q R S T U V W X Y Z
1 2 3 4 5 6 7 8 9 0
+ - * ^ : ; = , . / ! " ' &
\$ % & ' () [] = < > ?

(Commodore key +)

Plain BOLD OUTLINE ITALIC

VOIVOD ID 029A/666 13 point:

A B C D E F G H I J K L M N O P Q R S T U V W X Y Z
1 2 3 4 5 6 7 8 9 0 + - @ ' ^ : ; = , . / ! " # \$ % & ' () [] = < > ?
(Commodore key +) - _ @ ' ^ : ; = , . / ! " # \$ % & ' () [] = < > ?
PLAIN BOLD OUTLINE ITALIC

18 point:

A B C D E F G H I J K L M
N O P Q R S T U V W X Y Z
1 2 3 4 5 6 7 8 9 0 + - @ * ^ : ; = , .

VOIVOD 18 point:

/ ! " # \$ % & ' () [] = < > ?

(Commodore key +) - _ @ ' * ~ : { ; } / \

PLAIN BOLD OUTLINE ITALIC

VOLLYBALL ID 002A/42 18 point:

c [diagram] e [diagram] i [diagram] m [diagram] o [diagram] p [diagram] q [diagram] r [diagram]
t [diagram] u [diagram] w [diagram] x [diagram] y [diagram] z [diagram] 1 [diagram] 2 [diagram]
3 [diagram] 4 [diagram] 5 [diagram] 6 [diagram] 0 [diagram] + [diagram] - [diagram] @ [diagram] * [diagram]
^ [diagram] : [diagram] = [diagram] < [diagram] > [diagram] ? [diagram]

(Commodore key +) -

WHERE? ID 02CC/716 20 point:

a. b. c. d. e. f. g. h. i. j. k. l. m. n. o. p. q. r. s. t. u. v. w. x. y. z.

A B C D E F G H I J K L M

N O P Q R S T U V W X Y Z

1 2 3 4 5 6 7 8 9 0

4-68612-1

(Commodore key +) - @ 8

Outline

WIDE ID 0202/722 5 point:

11 12 13 14 15 16 17 18 19 20 21 22 23 24 25 26 27 28 29 30 31 32 33 34 35 36 37 38 39 40 41 42 43 44 45 46 47 48 49 50 51 52 53 54 55 56 57 58 59 60 61 62 63 64 65 66 67 68 69 70 71 72 73 74 75 76 77 78 79 80 81 82 83 84 85 86 87 88 89 90 91 92 93 94 95 96 97 98 99 100 101 102 103 104 105 106 107 108 109 110 111 112 113 114 115 116 117 118 119 120 121 122 123 124 125 126 127 128 129 130 131 132 133 134 135 136 137 138 139 140 141 142 143 144 145 146 147 148 149 150 151 152 153 154 155 156 157 158 159 160 161 162 163 164 165 166 167 168 169 170 171 172 173 174 175 176 177 178 179 180 181 182 183 184 185 186 187 188 189 190 191 192 193 194 195 196 197 198 199 200 201 202 203 204 205 206 207 208 209 210 211 212 213 214 215 216 217 218 219 220 221 222 223 224 225 226 227 228 229 230 231 232 233 234 235 236 237 238 239 240 241 242 243 244 245 246 247 248 249 250 251 252 253 254 255 256 257 258 259 260 261 262 263 264 265 266 267 268 269 270 271 272 273 274 275 276 277 278 279 280 281 282 283 284 285 286 287 288 289 290 291 292 293 294 295 296 297 298 299 300 301 302 303 304 305 306 307 308 309 310 311 312 313 314 315 316 317 318 319 320 321 322 323 324 325 326 327 328 329 330 331 332 333 334 335 336 337 338 339 340 341 342 343 344 345 346 347 348 349 350 351 352 353 354 355 356 357 358 359 360 361 362 363 364 365 366 367 368 369 370 371 372 373 374 375 376 377 378 379 380 381 382 383 384 385 386 387 388 389 390 391 392 393 394 395 396 397 398 399 400 401 402 403 404 405 406 407 408 409 410 411 412 413 414 415 416 417 418 419 420 421 422 423 424 425 426 427 428 429 430 431 432 433 434 435 436 437 438 439 440 441 442 443 444 445 446 447 448 449 450 451 452 453 454 455 456 457 458 459 460 461 462 463 464 465 466 467 468 469 470 471 472 473 474 475 476 477 478 479 480 481 482 483 484 485 486 487 488 489 490 491 492 493 494 495 496 497 498 499 500 501 502 503 504 505 506 507 508 509 510 511 512 513 514 515 516 517 518 519 520 521 522 523 524 525 526 527 528 529 530 531 532 533 534 535 536 537 538 539 540 541 542 543 544 545 546 547 548 549 550 551 552 553 554 555 556 557 558 559 560 561 562 563 564 565 566 567 568 569 570 571 572 573 574 575 576 577 578 579 580 581 582 583 584 585 586 587 588 589 590 591 592 593 594 595 596 597 598 599 600 601 602 603 604 605 606 607 608 609 610 611 612 613 614 615 616 617 618 619 620 621 622 623 624 625 626 627 628 629 630 631 632 633 634 635 636 637 638 639 640 641 642 643 644 645 646 647 648 649 650 651 652 653 654 655 656 657 658 659 660 661 662 663 664 665 666 667 668 669 670 671 672 673 674 675 676 677 678 679 680 681 682 683 684 685 686 687 688 689 690 691 692 693 694 695 696 697 698 699 700 701 702 703 704 705 706 707 708 709 710 711 712 713 714 715 716 717 718 719 720 721 722 723 724 725 726 727 728 729 730 731 732 733 734 735 736 737 738 739 740 741 742 743 744 745 746 747 748 749 750 751 752 753 754 755 756 757 758 759 760 761 762 763 764 765 766 767 768 769 770 771 772 773 774 775 776 777 778 779 780 781 782 783 784 785 786 787 788 789 790 791 792 793 794 795 796 797 798 799 800 801 802 803 804 805 806 807 808 809 810 811 812 813 814 815 816 817 818 819 820 821 822 823 824 825 826 827 828 829 830 831 832 833 834 835 836 837 838 839 840 841 842 843 844 845 846 847 848 849 850 851 852 853 854 855 856 857 858 859 860 861 862 863 864 865 866 867 868 869 870 871 872 873 874 875 876 877 878 879 880 881 882 883 884 885 886 887 888 889 890 891 892 893 894 895 896 897 898 899 900 901 902 903 904 905 906 907 908 909 910 911 912 913 914 915 916 917 918 919 920 921 922 923 924 925 926 927 928 929 930 931 932 933 934 935 936 937 938 939 940 941 942 943 944 945 946 947 948 949 950 951 952 953 954 955 956 957 958 959 960 961 962 963 964 965 966 967 968 969 970 971 972 973 974 975 976 977 978 979 980 981 982 983 984 985 986 987 988 989 990 991 992 993 994 995 996 997 998 999 1000 1001 1002 1003 1004 1005 1006 1007 1008 1009 1010 1011 1012 1013 1014 1015 1016 1017 1018 1019 1020 1021 1022 1023 1024 1025 1026 1027 1028 1029 1030 1031 1032 1033 1034 1035 1036 1037 1038 1039 1040 1041 1042 1043 1044

YAZOO ID 025C/604 12 point:

abcdefghijklmnopqrstuvwxyz
ABCDEFGHIJKLMNOPQRSTUVWXYZ
1234567890+-@*^:;=,./!"#\$%&'<>[]=<>?
(Commodore key +) - _ @ ' * ~ : { ; } / \
Plain Bold Outline ~~ka~~

16 point:

abcdefghijklmnopqrstuvwxyz
ABCDEFGHIJKLMNOPQRSTUVWXYZ
1234567890+-@*^:;=,./!"#\$%&'<>[]=<>?
(Commodore key +) - _ @ ' * ~ : { ; } / \
Plain Bold Outline ~~ka~~

20 point:

abcdefghijklmnopqrstuvwxyz
ABCDEFGHIJKLMNOPQRSTUVWXYZ
1234567890
+-@*^:;=,./!"#\$%&'<>[]=<>?
(Commodore key +) - _ @ ' * ~ : { ; } / \
Plain Bold Outline ~~ka~~

24 point:

abcdefghijklmnopqrstuvwxyz
ABCDEFGHIJKLMNOPQRSTUVWXYZ
1234567890

YAZOO 24 point:

+ - @ * ^ : ; = , . / ! " # \$ % & ' () [] = < > ?
(Commodore key +) - _ @ ` * ~ : {
; } / \
Plain Bold Outline *Ita*

32 point:

a b c d e f g h i j k l m
n o p q r s t u v w x y z
A B C D E F G H I J K L M
N O P Q R S T U V W X Y Z
1 2 3 4 5 6 7 8 9 0 + - @ * ^ :
; = , . / ! " # \$ % & ' () [] = < > ?
(Commodore key +) - _ @ ` * ~
: { ; } / \
Plain Bold Outline *Italic*

ANSI ID 01A3/419 23 point:

a b c d e f g h
i j k l m n o p q
r s t u v w x y z
A B C

CAD ROMAN ID 0198/408 14 point:

a b c d e f g h i j k l m n o p q r s t u v w x y z
A B C D E F G H I J K L M N O P Q R S T U V W X Y Z
1 2 3 4 5 6 7 8 9 0 , . ' " ' () ?
Plain Bold Outline Italic

CARDIOGRAPHY ID 0306/774 24 point:

A B C D E F G H I J K L M N O
P Q R S T U V W X Y Z
PLAIN BOLD
OUTLINE ITALIC

CHEMISTRY.CAD ID 0195/405 17 point:

a b c d e f g h i j k l m n o
p q r s t u v w x y z A B C D E F
G H I J K L M N O P Q R
1 2 3 4 5 6 7 8 9 0 + ()

CHESSBOARD ID 02FA/762 24 point:

A B C D E F G H I J K L M N O P Q
 R S T U V W X Y Z = is
 PLAIN BOLD
 OUTLINE *ITALIC*

ED FONT ID 015E/350 9 point:

a b c d e f g h i j k l m n o p q r s t u v w x y z
 A B C D E F G H I J K L M N O P Q R S T U V W X Y Z
 1 2 3 4 5 6 7 8 9 0 + - @ * ^ : ; = , . / ! " # \$ % & ' () [] = < > ?
 (Commodore key +) - _ @ \ * ~ : { ; } ' / \
 Plain Bold Outline *Italic*

EDGAR ALLEN ID 0305/773 18 point:

A B C D E F G H I J K L M N
 O P Q R S T U V W X Y Z
 PLAIN BOLD OUTLINE *ITALIC*

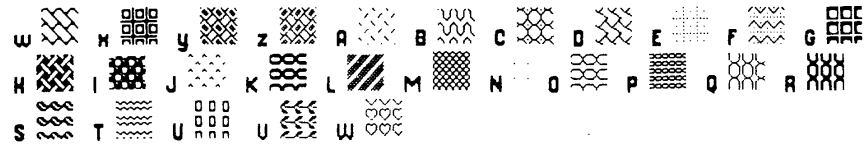
EXPRESS ID 02FF/767 24 point:

A B C D E F G H I J K L M
 N O P Q R S T U V W X Y Z
 PLAIN BOLD
 OUTLINE *ITALIC*

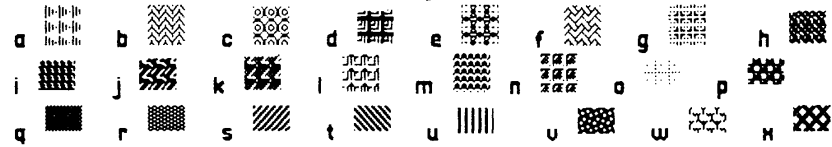
FILL A ID 01A1/417 23 point:

a b c d e f g h i j k l
 m n o p q r s t u v

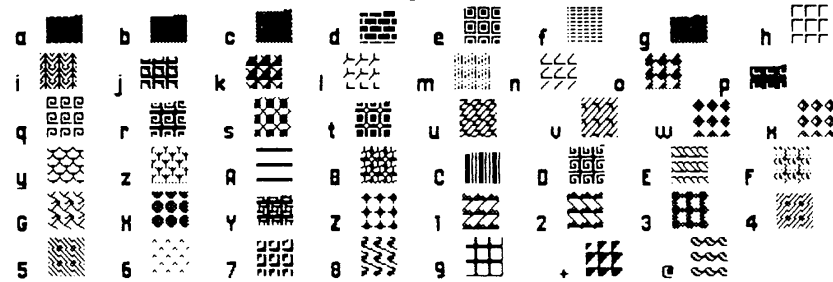
FILL A:



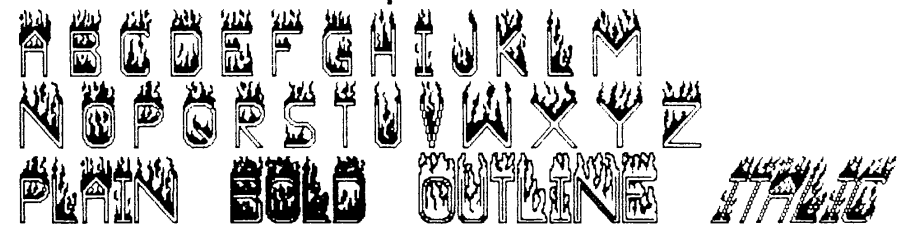
FILL B ID 01A6/422 23 point:



FILL C ID 01A8/424 27 point:



FIRE ID 0301/769 36 point:



5 X 7 CHAR ID 0191/401 8 point:

A B C D E F G H I J K L M N O P Q R S T U V W X Y Z
 1 2 3 4 5 6 7 8 9 0 + - . ^ = SP.NVE
 Plain Bold Outline Italic




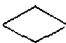
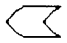
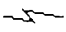


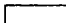
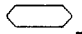

5 X 7 NORMAL ID 0192/402 12 point:

a b c d e f g h i j k l m n o p q r s t u v w x y z
 A B C D E F G H I J K L M N O P Q R S T U V W X Y Z
 1 2 3 4 5 6 7 8 9 0 + - . / '
 Plain Bold Outline Italic

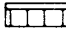
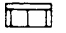


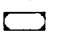


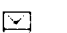
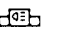






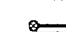

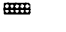
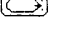





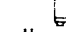
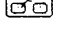


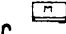
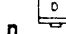



5 X 7 W/DESCN ID 01A4/420 11 point:

a b c d e f g h i j k l m n o p q r s t u v w x y z
 A B C D E F G H I J K L M N O P Q R S T U V W X Y Z
 1 2 3 4 5 6 7 8 9 0 + - . ^ = SP.NVE
 Plain Bold Outline Italic

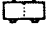

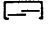



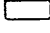






FLOW SYM ID 01A5/421 32 point:

A  B  C  D  F  L  O  Q 
 R  S  Z 
 Lower Case Characters:
 A B C D E F G H I J K L M N O P Q R S T U V W X Y Z
 1 2 3 4 5 6 7 8 9 0












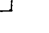
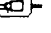
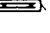




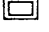
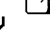



FURNITURE A ID 0199/409 26 point:

a  b  c  d  e  f  g  h 
 i  j  k  l  m  n  o  p  q 
 r  s  t  u  v  w  x  y 
 z  A  B  C  D  E  F  G 

FURNITURE A

H  I  J  K  L  M  N  O  P 
Q  R  S  T 

FURNITURE B ID 019A/410 22 point:

a  b  c  d  e  f  g  h  i 
j  k  l  m  n  o  p  q  r 
u  v  w  x  y 

GERMAN ID 019B/411 15 point:

A B C D E F G H I J K L M N O P Q R S T U V W X Y Z (lower)
a b c d e f g h i j k l m n o p q r s t u v w x y z (upper)
1 2 3 4 5 6 7 8 9 0 + - ? , / ' "
@ Ü * ^ ß ; : > < " " » [] ö & ä
PLAIN BOLD OUTLINE ITALIC

GLYPHIC ID 02F5/757 24 point:

A B C D E F G H I J
K L M N O P Q R S
T U V W X Y Z
PLAIN BOLD
OUTLINE ITALIC

GRAPH SYM ID 019C/412 18 point:

a — b — c — d — e — f — g — h — i — j —
k / l x m ° n ° o + p - q r ^ s * t ■ u ■ v ■ w ■

HEXAGON ID 02F6/758 14 point:

A B C D E F G H I J K L M N O
P Q R S T U V W X Y Z
PLAIN BOLD
OUTLINE ITALIC

28 point:

A B C D E F G H
I J K L M N O P Q
R S T U V W X Y Z
PLAIN BOLD ITALIC
OUTLINE BOLD

HOSTAGE ID 02FD/765 28 point:

A B C D E F G H I J K L M N
P Q R S T U V W X Y Z
PLAIN BOLD OUTLINE ITALIC

KATAKANA ID 0194/404 14 point:

a ア b イ c ウ d エ e オ f カ g キ h ク i ケ j コ
k サ l シ m ス n セ o ソ p タ q チ r ツ s テ t ト u ナ
v ニ w ノ x ネ y ヲ z ハ A ヒ B フ C ヘ D ホ E マ F ム
G ゴ H メ I モ J ヤ K ユ L ヲ M ラ N リ O ル P レ Q ロ
R ワ S キ T エ U ラ U ヲ W ヲ H ヲ Y ヲ Z ヲ I ガ J ギ
K グ L ゲ M ゴ N ザ O ジ P ゼ Q ズ R ギ S デ T ド U ギ
* ベ : ボ , バ , ブ , ノ , ペ ! ダ , , ギ # ズ S デ , ド G

KIDBITS/FR/A-Z ID 0064/100 40 point:

A B C D E F G
H I J K L M

41 point:

N O P Q R S T
U V W X Y Z

PLAIN BOLD
OUTLINE
ITALIC

KITEFONT ID 0002/2 24 point:

P Q R S T U V W X Y Z
1 2 3 4 5 6 7 8 9 0
PLAIN BOLD

LABEL SYM ID 0190/413 24 point:

a b c d e f g h i j
k l m n o p q r s t ...

LABEL SYM

u ° v w h e y + z - a (b / c x e " f
 G H I J K L M N O P Q
 R S T U V W X Y Z
 3 4 5 6 7 8 9 0

LINES 2 IP ID 02FC/764 18 point:

A B C D E F G H I J K L M
 N O P Q R S T U V W X Y Z
 PLAIN BOLD OUTLINE ITALIC

MACHINE.CAD ID 0197/407 13 point:

a b c d e f g h i j k l m n o p q r s t u v w x y z
 A B C D E F G H I J K L M N O P Q R S T U V W X Y Z
 1 2 3 4 5 6 7 8 9 0 P
 Plain Bold Outline Italic

MAP SYM ID 019E/414 22 point:

a b c d e f g h i j k
 l m n o p q r s t u
 v w x y z
 A B C D E F G
 H I J K L M N O P Q R
 S T U V W X Y

MAP SYM 2 ID 019F/415 22 point:

a b c d e f g h i j

MAP SYM 2

k l m n o p q r s
A B J K M N S

MAP SYM 3 ID 01A7/423 22 point:

a b c d e f g h i j k
l m n o p Oil q Gas r Water s t u
v w A B C D E F G H
1 BM 2 3 VABM 4 BM X 5 X 6 7 8 9
() [] < >

MEGA ULTRAINFRA ID 02F4/756

A B C D E F G H I J K L M N O P Q R S T U V W X Y Z
A B C D E F G H I J K L M N O
P Q R S T U V W X Y Z

MEGA HEADLINE ID 0223/547

a b c d e f g h i j k l m n
o p q r s t u v w x y z

MEGA HEADLINE

A B C D E F G H I

J K L M N O P Q R

S T U V W X Y Z

1 2 3 4 5 6 7 8 9 0

: ; < > = ? @ [] \ ^ ~ ! "

\$ % & ' () * + - , . - /

Plain Bold Outline *Italic*

MEGA SLANTS ID 03FD/1021

a b c d e f g h i j

k l m n o p q r s

t u v w x y z

MEGA SLANTS

A B C D E F G H I
J K L M N O P Q
R S T U V W X Y Z
1 2 3 4 5 6 7 8 9 0 : ; ?

Plain

Bold

Outline

Italic

MEGA SMURF ID 0223/547

a b c d e f g h i j
k l m n o p q r s
t u v w x y z

A B C D E F G H
I J K L M N O P Q R

MEGA SMURF

S T U V W X Y Z

1 2 3 4 5 6 7 8 9 0 : ; < > = ?

{ } ~ . / " # \$ % & ' ()

* + - , . - [] \ ^ _ @

Plain Bold

Outline Italic

MEGA SUPERB 30 ID 0206/518

abcdefghijklmnopqrstuvwxyz

ABCDEFGHIJKLMN

OPQRSTUVWXYZ

1 2 3 4 5 6 7 8 9 0 : ; < > = ? { }

~ @ [\ ^ _ ! " # \$ % & ' () * + - , . - /

Plain Bold Outline Italic

MUSIC # 6 b ID00FF/255 36, 37, 38 point:

Display created by the font author. MUSIC #6b font 36 point is shown
Using same index, Sharps are on 37 point and Naturals are on 38 point

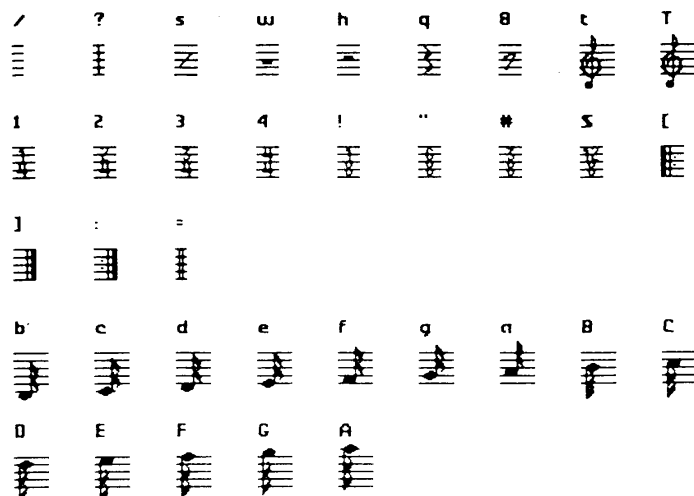
b	c	d	e	f	g	a	B	C
D	E	F	G	A	[]	i	j
k	l	m	n	h	I	J	K	L
M	N	H	p	q	r	s	c	u
o	P	Q	R	S	T	U	O	

MUSIC 1/16 ID 00FE/254 15 point

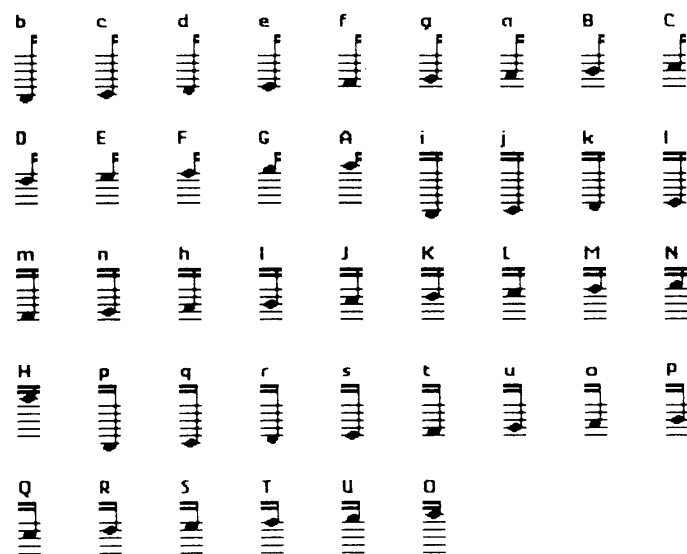
All fonts in 15 point are the same with minor exceptions in the MUSIC 1/2 font as noted

1	2	3	4	5	6	7	9
				MA	SUS	7	9
+	-	!	"	#	S	%	
aug.	dim.	DCal	DSal	*	†	MA	
			© COPYRIGHT		^	/	
SUS	7	9		^	/		
a	b	c	d	e	f	g	k
A	B	C	D	E	F	G	Coda
m	o	s	z	A	B	C	D
m	Coda		Finé	A	B	C	D
E	F	G	M	O	S		
E	F	G	m		DS.al		

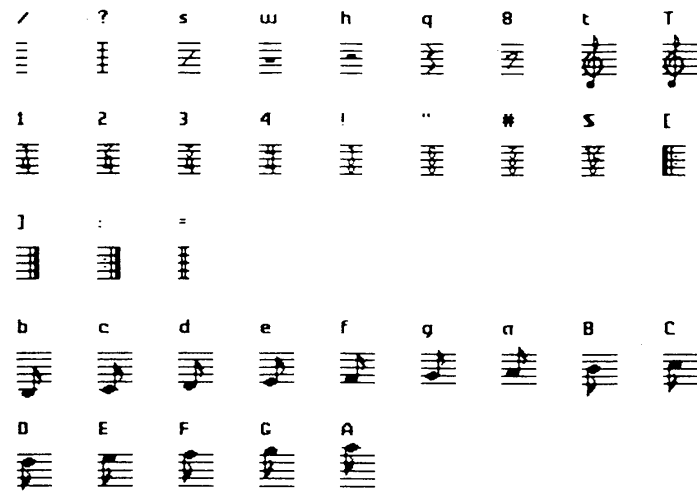
MUSIC 1/16 31 point



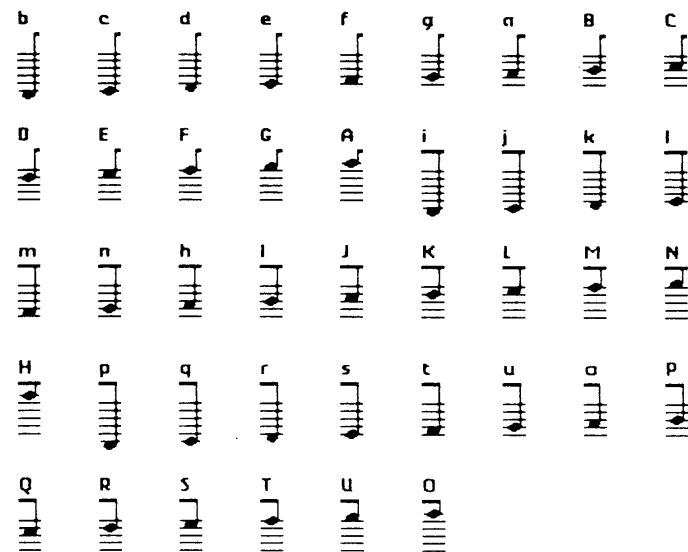
38 point



MUSIC 1/8 ID 00FD/253 31 point



38 point



MUSIC 1/4 ID 00FC/252 31 point

/	?	s	w	h	q	8	t	T
1	2	3	4	!	"	#	\$	[
]	:	=						
b	c	d	e	f	g	a	B	C
D	E	F	G	A				

32 point

1	2	3	4	5	6	7	8	9
0	:	:	[]	=	/	?	t
b	c	d	e	f	g	a	B	C
D	E	F	G	A				

MUSIC 1/2 ID 00FB/251 15 point

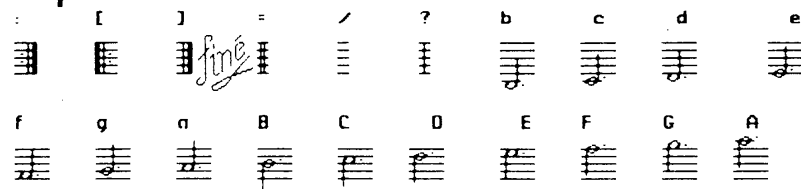
All keys are same as 1/16 font with the following exceptions

1	2	3	4	5	6	7	8	9	0

MUSIC 1/2 31 point

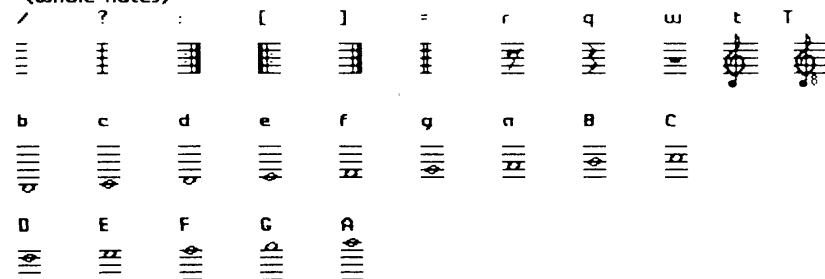


32 point



MUSIC 1 ID 00FA/250 31 point

(whole notes)



MUSIC ID 01A0/416 26 point:

a b c d e f g h i j
 k l m n o p q r s t u
 v w x y z B C D E F
 G H I J K L M
 D.C. al fine Chor us s f T z U m
 N O P Q R S T U V
 W 1 2 3 4 5 6 7 8
 9 0

OVAL ID 0300/768 12 point:

A B C D E F G H I J K L M
 N O P Q R S T U V W X Y Z
 PLAIN BOLD
 OUTLINE ITALIC



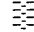


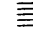








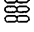


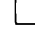



PARALLELOGRAM ID 02F8/760 12 point:

A B C D E F G H I J K L M
 N O P Q R S T U V W X Y Z
 PLAIN BOLD
 OUTLINE ITALIC











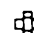
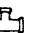

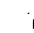
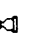






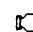



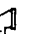



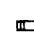




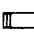
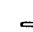
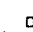
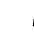
24 point:

A B C D E F G H I
 J K L M N O P Q
 R S T U V W X Y Z
 PLAIN BOLD
 OUTLINE ITALIC

PATTERNS ID 0196/406 19 point:

a  b  c  d  e  f  g 
h  i  j  k  l  m  n 
p  q  r  s  t  u  v 

PLUMBING ID 01A2/418 26 point:

a  b  c  d  e  f  g  h  i 
j  k  l  m  n  o  p  q  r 
s  t  u  v  w  x  y 
z  A  B  C  D  E  F  G 
H  I  J  K  L 

NEW NINE ID 039A/922 9 point:

abcdefghijklmnopqrstuvwxyz
ABCDEFGHIJKLMNOPQRSTUVWXYZ
1234567890+-=^*~!@#\$%^&'()_[]{}<>?
(Commodore key +) - _ / \
Plain **Bold** Outline *Italic*

OLD ENGLISH ID 0190/400 26 point:

a b c d e f g h i j k l m n o p q r
s t u v w x y z
A B C D E F G H I J K L M
N O P Q R S T U V W X Y Z
1 2 3 4 5 6 7 8 9 0 . : ; , . . ! ' ?
Plain **Bold** Outline *Italic*

```
abcdefghijklmnopqrstuvwxyz  
ABCDEFGHIJKLMNOPQRSTUVWXYZ  
1234567890.-@#%^&*~`|_{}[]\;/!'"#$%&'()=()+?  
(Commodore key +) - _
```

10 point:

abcdefghijklmnopqrstuvwxyz
 ABCDEFGHIJKLMNOPQRSTUVWXYZ
 1234567890+-@*^&=,./!:"#\$%&'()=<>?
 (Commodore key +) - _ @ `

11 point:

```

abcdefghijklmnopqrstuvwxyz
ABCDEFGHIJKLMNOPQRSTUVWXYZ
1234567890+~@*!=",./:~'#$%&'()*[]=<>?
(Commodore key +) - _ @ ¢ * " { } ; ' / \

```

12 point:

```

abcdefghijklmnopqrstuvwxyz
ABCDEFGHIJKLMNOPQRSTUVWXYZ
1234567890+-@*^_`=.,/!"#$%&'()[]=<>?
(Cammodore key +)  _  @  `  *  ~  {  :  }  /  \

```

13 point:

```

abcdefghijklmnopqrstuvwxyz
ABCDEFGHIJKLMNOPQRSTUVWXYZ
1234567890+~@*|:;.,/!"#$%&'()[]=(){}?
(Commodore key+) - _ @ % * ^ + ; < / ↑
Plain Bold Outline Italic

```

14 point:

ABCDEFGHIJKLMNOPQRSTUVWXYZ
 ABCDEFGHIJKLMNOPQRSTUVWXYZ

PUBLISH FONTS 14 point:

1 2 3 4 5 6 7 8 9 0 + - * % : ; = , . / ! " # \$ % & ' () + ! = < > ?

PLAIN **BOLD** OUTLINE *ITALIC*

15 point:

a b c d e f g h i j k l m n o p q r s t u v w x y z

A B C D E F G H I J K L M N O P Q R S T U V W X Y Z

1 2 3 4 5 6 7 8 9 0 + - * % ^ ; : = , . / ! " # \$ % & ' () [] = < > ?

(Commodore key +) - _ @ / * ^ : (;) / \

Plain **Bold** Outline *Italic*

RAINSTORM ID 012C/300 34 point:

A B C D E F G H I J K L M
N O P Q R S T U V W X Y Z
1 2 3 4 5 6 7 8 9 0 ?

+ - * % ^ ; : = , . / ! " # \$ % & ' () [] = < > ?
PLAIN **BOLD** OUTLINE *ITALIC*

REALROUND ID 0303/771 14 point:

a b c d e f g h i j k l m n o p q r s t u v w x y z

A B C D E F G H I J K L M

N O P Q R S T U V W X Y Z

Plain **Bold** Outline *Italic*

REAL ROUND 24 point:

a b c d e f g h i j k l m
n o p q r s t u v w x y z
A B C D E F G H I J
K L M N O P Q R S T
U V W X Y Z
Elaine Bold Outline Italic

SANSKRIT ID 006C/108 10 point:

a b b c c d d e e f ā g g h h i i j j k k l l m m n n o o p p q i r r s s t t u u
v v w w ś ś y y z ū A A B B C C D D E E F A G G H H I I J J K K L L M M N N O O
P P Q i R R S S T T U U V V W ś H S Y Y Z Ū
1 1 2 2 3 3 4 4 5 5 6 6 7 7 8 8 9 9 0 0 ++ -- @ @ * * ^ ^ : n ; r = = . t . d / l
! h " m # # \$ ā % n & f ' ' (()) [N] R < T > D ? L

12 point:

a b b c c d d e e f ā g g h h i i j j k k l l m m n n o o p p q i r r s s t t
u u v v w w ś ś y y z ū A A B B C C D D E E F A G G H H I I J J K K L L M M
N N O O P P Q i R R S S T T U U V V W ś H S Y Y Z Ū
1 1 2 2 3 3 4 4 5 5 6 6 7 7 8 8 9 9 0 0 ++ -- @ @ * * ^ ^ : n ; r = = . t . d / l
! h " m # # \$ ā % n & f ' ' (()) [N] R < T > D ? L

18 point:

a b b c c d d e e f ā g g h h i i j j k k l l m m n n o o p p q i
r r s s t t u u v v w w ś ś y y z ū A A B B C C D D E E F A
G G H H I I J J K K L L M M N N O O P P Q i R R S S T T U U
V V W ś H S Y Y Z Ū
1 1 2 2 3 3 4 4 5 5 6 6 7 7 8 8 9 9 0 0 ++ -- @ @ * * ^ ^ : n ; r
= = . t . d / l ! h " m # # \$ ā % n & f ' ' (()) [N] R < T > D ? L

SPACE AGE ID 02FB/763 24 point:

A B C D E F G H I J K L M N
O P Q R S T U V W X Y Z
PLAIN BOLD
OUTLINE ITALIC

SPEED2 ID 0304/772 18 point:

A B C D E F G H I J K L M
N O P Q R S T U V W X Y Z
PLAIN BOLD OUTLINE ITALIC

STRIPED ID 0302/770 24 point:

a b c d e f g h i j k l m
n o p q r s t u v w x y z
A B C D E F G H I J K L M N
O P Q R S T U V W X Y Z
: ; , . ! ?
Plain Bold Outline Italic

TAFONT ID 0001/1 14 point:

A B C D E F G H I J K L M N O P Q R S T U V W X Y Z
A B C D E F G H I J K L M N O P Q R S T U V W X Y Z
1 2 3 4 5 6 7 8 9 0 + - * : = , . / ! " ' () < > ?
PLAIN BOLD OUTLINE ITALIC

TAFONT 24 point:

A B C D E F G H I J K L M N O P Q R S T U V W X Y Z
A B C D E F G H I J K L M N O P Q R S T U V W X Y Z
1 2 3 4 5 6 7 8 9 0 + - * : = , . / ! " ' () < > ?
PLAIN **BOLD** **OUTLINE** *ITALIC*

TRAPEZOID ID 02F7/759 12 point:

A B C D E F G H I J K L M
N O P Q R S T U V W X Y Z
PLAIN **BOLD** **OUTLINE** *ITALIC*

24 point:

A B C D E F G H
I J K L M N O P Q
R S T U V W X Y Z
PLAIN **BOLD** **OUTLINE** *ITALIC*

TREK 24 ID 0032/50 24 point:

a b c d e f g h i j k l m
n o p q r s t u v w x y z
A B C D E F G H I J K L M
N O P Q R S T U V W X Y Z :
Plain **Bold** **Outline** *Italic*

TYPESETTER.CAD ID 0193/403 31 point:

a b c d e f g h i j k l m
n o p q r s t u v w x y z
A B C D E F G H I J K L M N
O P Q R S T U V W X Y Z
1 2 3 4 5 6 7 8 9 0
: ; , . ! ' ?

Brent
Dane

Plain Bold Outline *Italic*

WEATHERLY ID 0307/775 24 point:

A B C D E F G H I J K L M N
O P Q R S T U V W X Y Z
PLAIN BOLD
OUTLINE *ITALIC*

WHAT ID 02F9/761 30 point:

A B C D E F G H I
J K L M N O P Q
R S T U V W X Y Z
PLAIN BOLD
OUTLINE *ITALIC*

SOHO. ID 008E/142 34 point:

A B C D E F G H I J K L M N O P
Q R S T U V W X Y Z ^ []

35 point:

a b c d e f g h i j k l m n o p q
r s t u v w x y z ^ []

36 point:

1 2 3 4 5 6 7 8 9 0
+ - @ * ^ : ; = , . / ! "
\$ % & ' () [] = < > ?

(Commodore key +) - - @ ' * ~
: { ; } / \

Plain

Bold

Outline

Italic

YOSEMITE ID 00FA/250 24 point:

a b c d e f g h i j
k l m n o p q r s
t u v w x y z

YOSEMITE 24 point:

A B C D E F G H I
J K L M N O P Q R
S T U V W X Y Z
1 6 7 8 9 0

Plain
Outline

Bold
Italic

25 point:

1 2 3 4 5 6 7 8 9 0
. " , . ! " \$ % & ' () * . ? () . ^ = " "

BOGUS ELITE-40 ID 00DE/222 40 point:

A B C D E F
G H I J K L M
N O P Q R S
T U V W X Y Z

Plain
Outline

Bold
Italic

bogus elite-40 ID 00DF/223 40 point:

**a b c d e f g h i
j k l m n o p q r
s t u v w x y z**

Bogus Elite ID 00E0/224 15 point:

**a b c d e f g h i j k l m n o p q r s t u v w x y z
A B C D E F G H I J K L M N
O P Q R S T U V W X Y Z
1 2 3 4 5 6 7 8 9 0
Plain Bold Outline *Italic***

20 point:

**a b c d e f g h i j k l m n
o p q r s t u v w x y z
A B C D E F G H I J K L M N
O P Q R S T U V W X Y Z
1 2 3 4 5 6 7 8 9 0
Plain Bold Outline *Italic***

30 point:

**a b c d e f g h i j k
l m n o p q r s t u
v w x y z**

Bogus Elite 30 point:

A B C D E F G H
I J K L M N O P Q
R S T U V W X Y Z
Plain Bold
Outline *Italic*

ESPANOL ID 0003/3 12 point:

abcdefghijklmnopqrstuvwxyz
ABCDEFGHIJKLMNOPQRSTUVWXYZ
1234567890+-*~_"/!"#\$%&'()=<>? @=ñ ^=Á [=á]=ú
(Commodore key +) =É @e *i :ú :ó /ñ
Plain Bold Outline *Italic*

MORGANNA ID 03F2/1010 24 point:

abcdefghijklmnopqrstuvwxyz
ABCDEFGHIJKLM
NOPQRSTUVWXYZ
1234567890
+ - \$; = , . ! " \$ % & ' () ? @ = \$
Plain Bold Outline *Italic*

36 point:

abcdefghijklm
nopqrstuvwxyz

MORGANNA 36 point:

A B C D E F G H I J K L M
N O P Q R S T U V W X Y Z

Plain Bold Outline *Italic*

MORGANNA 36 ID 0000/0 36 point:

1 2 3 4 5 6 7 8 9 0

+ - : ; = , . ! " \$ % & ' () ? € = €

SEPULCHRE ID 01F4/500 24 point:

a b c d e f g h i j k l m

n o p q r s t u v w x y z

A B C D E F G H I J K L M

N O P Q R S T U V W X Y Z

1 2 3 4 5 6 7 8 9 0 ; : ' ?

Plain Bold Outline *Italic*

SHILLING ID 00AD/173 10 point:

☑ 1 ← 2 → 3 ↑ 4 ↓ ☐ ☒

12 point:

α × b ★ c † d € e ✓ f ⅛ g ¼ h ½ i k j ⅙ k ⅓ l ¼ m ½ n ∞
o × p £ q ¼ r × s 64UM t ↗ u FCUG v ⊕ w ∞ x ⊕ y ⊕ z ⊕